



# International Society for the Study of Women's Sexual Health



## Fall Course

# 2014

**Scottsdale, AZ - USA**

**DoubleTree Resort by  
Hilton Hotel Paradise Valley  
November 14-16, 2014**

Jointly provided by:  
International Society for the Study of Women's Health  
and  
Center for Continuing and Outreach Education  
at Rutgers Biomedical and Health Sciences

In conjunction with:  
The Society for Sex Therapy and Research (SSTAR)  
Case Conference November 13, 2014

SSTAR Society for Sex Therapy & Research

## // TABLE OF CONTENTS

<b>WELCOME MESSAGE</b> .....	<b>3</b>
<b>ISSWSH BOARD OF DIRECTORS 2014-2015</b> .....	<b>4</b>
<b>CME INFORMATION</b> .....	<b>5</b>
<b>FACULTY INFORMATION</b> .....	<b>8</b>
<b>DISCLOSURE DECLARATIONS</b> .....	<b>9</b>
<b>PROGRAM - FRIDAY NOVEMBER 14, 2014</b> .....	<b>11</b>
<b>PROGRAM - SATURDAY NOVEMBER 15, 2014</b> .....	<b>12</b>
<b>PROGRAM - SUNDAY NOVEMBER 16, 2014</b> .....	<b>14</b>
<b>FLOOR PLAN</b> .....	<b>15</b>

# // WELCOME MESSAGE

Dear Registrant,

We are excited to welcome you to the new expanded Fall Course jointly provided by the International Society for the Study of Women's Sexual Health and Rutgers, The State University of New Jersey. This year we returned to the site of so many past successful courses, Scottsdale, Arizona. In response to the request from past registrants for more time, we start the course earlier on Friday. We hope this will address those needs.

The basic topics and teaching objectives of the course remain in place. All content has been updated, and some of the interesting specialty lectures have been changed. Moving forward the ISSWSH course faculty will change from course to course, with some repeat lecturers and qualified local speakers being brought onto the faculty as time and location allow. This will maintain the flavor of the course while allowing it to evolve. Potential attendees of the courses include (but or not limited to) physicians, residents, students, nurse practitioners, physical therapists and sex therapists.

This year we have returned to a format that allows all registrants an opportunity to attend all five breakout sessions on Saturday and on Sunday, rather than having to pick and choose each day. We believe this will be beneficial both to the attendees and to the course instructors. You will also have an opportunity to hear case studies first hand from patients with distressing sexual health problems, and the changes to their lives with treatment. Finally, with the expanded hours we are including lunch on Friday as part of the program. For the kick-off of this new feature we are having a sponsored lunch with a special guest speaker discussing advocacy

**Sue W. Goldstein, BA, CCRC, IF**  
Interim Education Chairman

# // ISSWSH BOARD OF DIRECTORS 2014-2015

## **President**

Sharon J. Parish, MD, IF, NCMP

## **President Elect**

Irwin Goldstein, MD, IF

## **Secretary**

James A. Simon, MD, IF

## **Treasurer**

David Portman, MD, FACOG, IF

## **Past President**

Andrew T. Goldstein, MD, FACOG, IF

## **Directors**

Marianne Brandon, PhD, IF

Anita Clayton, MD, IF

Murray Freedman, MD

William A. Fisher, PhD

Shari B. Goldfarb, MD

Debra Herbenick, PhD, MPH

Marcel Waldinger, MD

## **Fellowship Chairman**

Susan Kellogg-Spadt, PhD, CRNP, IF

## **On-line Services Chairman**

Crista Elcira Johnson-Agbakwu, MD, MSc, IF

## **Global Development Chairman**

Sue W. Goldstein, BA, CCRC, IF

## **Scientific Program Chairman**

Noel N. Kim, PhD

## **Scientific Program Co-Chairman**

Debra Herbenick, PhD, MPH

## **Ex-Officio Member**

Sue W. Goldstein, BA, CCRC, IF

# // CME INFORMATION

## Activity Overview and Description

The primary goal of the meeting is to serve as a multidisciplinary forum in which to discuss the clinical assessment and management, ethical and societal issues, and outcome of sex therapy interventions in clinical cases.

## Target Audience

This educational activity will be of interest to physicians, residents, students, nurse practitioners, physical therapists and sex therapists.

## Learning Objectives

Upon completion of this activity, participants should be better able to:

- Describe the broad epidemiology, prevalence, classification systems and models for female sexual disorders in clinical practice.
- Develop skills that allow for discussing sexual concerns with female patients; review content to be covered in screening and diagnosis.
- Utilize demonstration interviews with live patients and their partners to teach optimal sexual problem history taking.
- Describe the various diagnostic tests needed to properly diagnose a women with sexual dysfunction.
- Identify the impact of common gynecologic conditions on women's sexual health; integrate evidence-based practice.
- Distinguish patterns of sexuality during pregnancy and the postpartum; Recognize strategies that will facilitate counseling and discussion with patients on expected changes in sexual health during pregnancy and the postpartum.
- Describe components of cognitive-behavior sex therapy.
- Cite rational and logical use of off-label treatments affecting central excitatory and inhibitory neurotransmitters.
- Describe the relationship between common psychiatric disorders in women, particularly depression, and female sexual dysfunctions and provide an evidenced-based approach to the appropriate use of

psychopharmacological agents in this clinical context.

- Describe the nature of gender dysphoria, its etiology and treatment options; Cite the changes in the standards of care for the treatment of gender dysphoria that have been designed to keep up to date with new advances and to remove unnecessary hurdles to access care.
- Identify the psychosocial and physiologic factors that can negatively impact a woman's sexual function following a cancer diagnosis and treatment; Apply a multidisciplinary treatment approach to female sexual dysfunction in the cancer survivor.
- Describe the potential positive and negative impact of various contraceptive methods on sexual function.
- Learn the true prevalence of dyspareunia; Learn the important anatomic landmarks to examine in an exam for a woman with dyspareunia.
- Describe the possible sources of sexual pain related to skin, musculoskeletal, infective, pharmacologic and genitourinary factors.
- Know the three most common causes of dyspareunia; Learn the appropriate aspects of the medical history and physical examination that determine the cause of the dyspareunia.
- Describe the vulvoscopic presentations of VIN and non-neoplastic vulvar dermatologic conditions, indicating when to biopsy for diagnostic purposes.
- Characterize HPV and other possible vulvar diseases that may be seen through the course of examining women presenting with dyspareunia and therefore can be successfully treated.
- Learn to recognize which subset of women will benefit from the surgical treatment of dyspareunia; Learn the proper techniques for vulvar vestibulectomy.
- Apply relevant data and appropriate individual choices to the education of patients in order to guide them through the process of HT decision making; Analyze the major differences in available HT choices to help individualize the treatment and enhance the benefits while decreasing the risks for the menopausal patient.
- Discuss the efficacy and safety of testosterone therapy for Hypoactive Sexual Desire Disorder in women.
- Identify the benefits and risks associated with off

## // CME INFORMATION

label testosterone use for Hypoactive Sexual Desire Disorder (distressing low sexual desire); Compare and contrast the off label use of various FDA-approved male products in women and compounded testosterone treatment options.

- Recognize the clinical manifestations of Genitourinary Syndrome of Menopause; Apply evidence-based treatment options, both hormonal and nonhormonal, to the management of GSM.
- Characterize the pharmacologic agents and devices being developed for FSD.
- Characterize the underlying pathophysiologies leading to PGAD and thus direct therapeutic strategies more appropriately.
- Recognize lichen sclerosus, lichen planus, lichen simplex chronicus; Learn the proper treatment for these vulvar dermatoses.
- Distinguish when to use which diagnostic test in which specific patient.
- Discriminate between the use of oral vs non-oral estrogens, in particular with respect to differences and outcomes; Alter dosing and regimen in response to patient concerns and problems with HT; Apply better counseling about what patients should anticipate from and report about their use of HT; Offer the full range of progestogen options with respect to dose and regimen to better suit specific patient needs.
- Describe the specific assessment and treatments for sexual dysfunction related to musculoskeletal factors.
- Implement the patient-centered, collaborative motivational interviewing technique Ask-Tell-Ask in sexual problem counseling for female sexual dysfunctions.
- Describe the common ICD and CPT codes relevant to sexual medicine.
- Describe a total vestibulectomy with vaginal advancement flap and why a partial vestibulectomy is not a practical option for a positive patient outcome.
- Cite the causes and treatment of hormonally mediated vestibulodynia; Outline the causes and treatment of hypertonic pelvic floor muscle dysfunction; Describe the causes and treatment of neuroproliferative vestibulodynia and of desquamative inflammatory

vaginitis.

- Apply principals of diagnosis and treatment algorithm to real life situations.
- Review the goals of office-based counseling for non-mental health professionals.
- Describe the specific action and indications for use of vaginal lubricants, moisturizers and vulvar creams in the treatment of sexual dysfunction.
- Describe the impact of cross-cultural norms and practices on women's sexual health; Integrate evidence-based, culturally competent practice in addressing sexual concerns that arise in caring for women from diverse racial and ethnic backgrounds.

### Method of Participation

In order to meet the learning objectives and receive continuing education credits, participants are expected to check in at the registration desk each day of the program, attend the program and complete an on-line evaluation and credit request form at the conclusion of the activity. A letter certifying your attendance and credit verification will be emailed to you upon completion of the online evaluation survey and credit request form.

# // CME INFORMATION

## Accreditation



### Physicians

This activity has been planned and implemented in accordance with the Essential Areas and Policies of the Accreditation Council for Continuing Medical Education (ACCME) through the joint providership of Rutgers, The State University of New Jersey and the International Society for the Study of Women's Sexual Health. Rutgers, The State University of New Jersey is accredited by the ACCME to provide continuing medical education for physicians.

Rutgers, The State University of New Jersey designates this live activity for a maximum of 19.25 *AMA PRA Category 1 Credits™*. Physicians should claim only the credit commensurate with the extent of their participation in the activity.

### APA Accreditation Statement

ISSWSH is approved by the American Psychological Association to sponsor continuing education for psychologists. ISSWSH maintains responsibility for this program and its content. Full attendance is required for psychologists; no partial credits will be offered for partial attendance.

### NPWH Accreditation Statement

This activity has been evaluated and approved by the Continuing Education Approval Program of the National Association of Nurse Practitioner in Women's Health for 19.00 contact hours of continuing education credit including 4.00 contact hours of pharmacology content. NPWH Activity no.14-08. Each participant should claim only those contact hours that he/she actually spent in the educational activity.

***Furthermore we have applied for AASECT credits.***

### **Policy: Filming, Photography, Audio Recording, and Cell Phones**

No attendee/visitor at the ISSWSH 2014 Fall Course meeting may record, film, tape, photograph, interview, or use any other such media during any presentation, display, or exhibit without the express, advance approval of the ISSWSH Executive Director. This policy applies to all ISSWSH members, nonmembers, guests, and exhibitors, as well as members of the print, online, or broadcast media.

## // FACULTY INFORMATION

### Fall Course Chairman

**Sue W. Goldstein, BA, CCRC, IF**

Program Coordinator, San Diego Sexual Medicine  
San Diego, CA

### Fall Course Faculty

**Alan M. Altman, MD, IF**

Private Practice, Dr. Altman Consultative Gynecology  
Aspen, CO

**Eli Coleman, PhD**

Professor and Chair in Sexual Health  
Director, Program in Human Sexuality  
University of Minnesota Medical Center  
Minneapolis, MN

**Andrew T. Goldstein, MD, FACOG, IF**

Private Practice, Center for Vulvovaginal Disorders  
Washington, DC/New York, NY/Annapolis, MD

**Irwin Goldstein, MD, IF**

Clinical Professor of Surgery at University of California,  
San Diego  
Director, Sexual Medicine Alvarado Hospital  
Director, San Diego Sexual Medicine  
San Diego, CA

**Crista Elcira Johnson-Agbakwu, MD, MSc, IF**

Obstetrics & Gynecology, Maricopa Integrated Health  
Systems  
Phoenix, AZ

**Susan Kellogg-Spadt, PhD, CRNP, IF**

Director of Female Sexual Medicine, Center for Pelvic  
Medicine at Academic Urology of PA, LLC  
Rosemont, PA

**Sheryl A. Kingsberg, PhD, IF**

Division Chief, OB/GYN Behavioral Medicine at UH Case  
Medical Center  
Professor of OB/GYN and Psychiatry at Case Western  
Reserve University School of Medicine  
Cleveland, OH

**Sharon J. Parish, MD, IF, NCMP**

Professor of Medicine in Clinical Psychiatry, Weill Cornell  
Medical College  
Director of Medical Services, NY Presbyterian Hospital,  
Westchester Division  
New York, NY

### Peer Review

In order to help ensure content objectivity, independence, and fair balance, and to ensure that the content is aligned with the interest of the public, CCOE has resolved all potential and real conflicts of interest through content review by a non-conflicted, qualified reviewer. This activity was peer-reviewed for relevance, accuracy of content, and balance of presentation by:

**Tami Rowen, MD, MS**

Clinical Instructor  
Obstetrics/Gynecology & Reproductive Sciences  
University of California San Francisco School of Medicine  
San Francisco, CA



## // DISCLOSURE DECLARATIONS

In accordance with the disclosure policies of Rutgers and to conform with ACCME and FDA guidelines, individuals in a position to control the content of this educational activity are required to disclose to the activity participants: 1) the existence of any relevant financial relationship with any entity producing, marketing, re-selling, or distributing health care goods or services consumed by, or used on, patients, with the exemption of non-profit or government organizations and non-health care related companies, within the past 12 months; and 2) the identification of a commercial product/device that is unlabeled for use or an investigational use of a product/device not yet approved.

### Faculty

**Alan M. Altman, MD, IF** has disclosed the following relevant financial relationships:

- **Speaker:** Novogyne, Shiongi
- **Member, Scientific Advisory Board:** Sprout Pharmaceuticals

**Eli Coleman, PhD, LP** has disclosed the following relevant financial relationships:

- **Grant/Research Support:** National Institute of Mental Health
- **Consultant:** Sexual Health Advisory Board, Church & Dwight Inc.

**Andrew T. Goldstein, MD FACOG, IF** has disclosed the following relevant financial relationships:

- **Member, Scientific Advisory Board:** Emotional Brain, Inc.

**Irwin Goldstein, MD, IF** has disclosed the following relevant financial relationships:

- **Grant/Research Support:** Apricus, Emotional Brain, Neogyn, Trimel
- **Consultant:** Apricus, Exploramed, Strategic Science & Technologies
- **Speaker:** Ascend, Shionogi

- **Member, Scientific Advisory Board:** Apricus, Emotional Brain, Intimina, Neogyn, Strategic Science & Technologies

**Sue W. Goldstein, BA, CCRC, IF** has disclosed the following relevant relationships:

- **Grant/Research Support:** Apricus, Emotional Brain, Neogyn, Trimel
- **Consultant:** Apricus, Exploramed, Strategic Science & Technologies
- **Speaker:** Ascend, Shionogi
- **Member, Scientific Advisory Board:** Apricus, Emotional Brain, Intimina, Neogyn, Strategic Science & Technologies

**Crista Elcira Johnson-Agbakwu, MD, MSc, IF** has disclosed the following relevant relationships:

- **Grant/Research Support:** The National Institute on Minority Health and Health Disparities (NIMHD), Patty Brisben Foundation for Women's Sexual Health

**Susan Kellogg-Spadt, PhD, CRNP, IF** has disclosed the following relevant relationships:

- **Consultant:** Neogyn, Novo Nordisk, Shionogi, Sprout

**Sheryl A. Kingsberg, PhD, IF** has disclosed the following relevant relationships:

- **Grant/Research Support:** Palatin, Trimel
- **Consultant:** Apricus, Metagenics, Novo Nordisk, Palatin, Pfizer Inc., Shionogi, Sprout, Strategic Science & Technologies, Teva, Trimel
- **Member, Scientific Advisory Board:** Apricus, Emotional Brain, Metagenics, Sprout, Viveve
- **Stock Shareholder:** Vieve

**Sharon J. Parish, MD, IF, NCMP** has disclosed the following relevant relationships:

- **Speaker:** Pfizer, Inc.
- **Member, Scientific Advisory Board:** Emotional Brain, Pfizer, Inc., Sprout

# // DISCLOSURE DECLARATIONS

## Peer Reviewer

Tami Rowen, MD, MS has no relevant financial relationships to disclose.

## Rutgers Staff

Elizabeth Ward, MSJ, Executive Director and Tristan Nelsen, MNM, CMP, Senior Program Manager, have no relevant financial relationships to disclose.

## International Society for the Study of Women's Sexual Health Staff

David Casalod, Executive Director, Tessa Benitez, Association Manager and Vivian Gies, Meeting Manager have no relevant financial relationships to disclose.

## Off-Label/Investigational Use

This activity contains information on commercial products/devices that are unlabeled for use or investigational uses of products not yet approved. Faculty will disclose off-label/investigational uses within their presentations.

## Disclaimer

The views expressed in this activity are those of the faculty. It should not be inferred or assumed that they are expressing the views of any manufacturer of pharmaceuticals or devices, Rutgers or the International Society for the Study of Women's Health.

It should be noted that the recommendations made herein with regard to the use of therapeutic agents, varying disease states, and assessments of risk, are based upon a combination of clinical trials, current guidelines, and the clinical practice experience of the participating presenters. The drug selection and dosage information presented in this activity are believed to be accurate. However, participants are urged to consult all available data on products or procedures before using them in clinical practice.

Rutgers and the International Society for the Study of Women's Health reserve the right to modify the activity content and faculty if necessary.

Copyright © 2014 Rutgers, The State University of New Jersey and the International Society for the Study of Women's Health. All rights reserved including translation into other languages. No part of this activity may be reproduced or transmitted in any form or by any means, electronic or mechanical, including photocopying, recording, or any information storage and retrieval systems, without permission in writing from Rutgers and the International Society for the Study of Women's Health.

For questions or concerns regarding this activity, please call the ISSWSH Executive Office at +1 (218) 461 5115.

# // PROGRAM - FRIDAY NOVEMBER 14, 2014

All sessions will take place in the **Center Ballroom**, unless shown otherwise.

11:00 a.m. - 11:15 a.m.

## **Welcome/Introduction/Housekeeping**

*Sharon J. Parish, MD, IF, NCMP &  
Sue W. Goldstein, BA, CCRC, IF*

11:15 a.m. - 11:45 a.m.

## **Epidemiology/Models/Classification**

*Sharon J. Parish, MD, IF, NCMP*

11:45 a.m. - 12:15 p.m.

## **Sexual History/Psychological & Psychosocial History/ Screening Questionnaires**

*Sheryl A. Kingsberg, PhD, IF*

12:15 p.m. - 1:00 p.m.

## **Patient Demos (2), Commentary**

*Moderator: Sharon J. Parish, MD, IF, NCMP  
Individual (Screening): Susan Kellogg-Spadt, PhD, CRNP, IF  
Couple (Assessment Interview): Sheryl A. Kingsberg, PhD, IF*

1:00 p.m. - 1:50 p.m.

## **🍴 Industry Lunch Symposium**

*Location: South Ballroom*

1:50 p.m. - 2:00 p.m.

## **☕ Break**

*Location: Foyer*

2:00 p.m. - 2:30 p.m.

## **Diagnostic Testing/Genital Pathophysiology**

*Irwin Goldstein, MD, IF*

2:30 p.m. - 2:55 p.m.

## **Gynecologic Conditions and Sexual Dysfunction**

*Crista Elcira Johnson-Agbakwu, MD, MSc, IF*

2:55 p.m. - 3:20 p.m.

## **Sexual Health in Pregnancy and Post-Partum**

*Crista Elcira Johnson-Agbakwu, MD, MSc, IF*

3:20 p.m. - 3:50 p.m.

## **Psychological and Behavioral Therapies**

*Sheryl A. Kingsberg, PhD, IF*

3:50 p.m. - 4:05 p.m.

## **☑ Break with Exhibitors**

*Location: Foyer*

4:05 p.m. - 4:20 p.m.

## **Central Mechanisms of FSD/Central Agents to Treat FSD**

*Irwin Goldstein, MD, IF*

4:20 p.m. - 4:45 p.m.

## **Psychiatric Disorders and Sexual Dysfunction**

*Sharon J. Parish, MD, IF, NCMP*

4:45 p.m. - 5:15 p.m.

## **Understanding Mechanisms of Gender Dysphoria and its Treatment**

*Eli Coleman, PhD*

5:15 p.m. - 5:40 p.m.

## **Cancer and Sexuality**

*Irwin Goldstein, MD, IF*

5:40 p.m. - 6:30 p.m.

## **Contraception and Sexual Function: Panel Discussion**

*Moderator: Susan Kellogg-Spadt, PhD, CRNP, IF  
Faculty: Andrew T. Goldstein, MD, FACOG, IF  
Irwin Goldstein, MD, IF  
Crista Elcira Johnson-Agbakwu, MD, MSc, IF*

6:30 p.m. - 6:45 p.m.

## **Q & A**

6:45 p.m. - 7:30 p.m.

## **🍷 Welcome Reception**

*Location: Foyer*

# // PROGRAM - SATURDAY NOVEMBER 15, 2014

All sessions will take place in the **Center Ballroom**, unless shown otherwise.

7:15 a.m. - 8:00 a.m.

## **Breakfast**

*Location: Foyer*

8:00 a.m. - 8:05 a.m.

## **Housekeeping**

*Sue W. Goldstein, BA, CCRC, IF*

8:05 a.m. - 8:25 a.m.

## **Prevalence of Dyspareunia, Normal Anatomy**

*Andrew T. Goldstein, MD, FACOG, IF*

8:25 a.m. - 8:55 p.m.

## **Physical Exam, Vulvoscopy, Pelvic Floor, Labs**

*Susan Kellogg-Spadt, PhD, CRNP, IF*

8:55 p.m. - 9:35 p.m.

## **Causes of Dyspareunia**

*Andrew T. Goldstein, MD, FACOG, IF*

9:35 a.m. - 9:50 a.m.

## **HPV, VIN and Vulvar Disease**

*Susan Kellogg-Spadt, PhD, CRNP, IF*

9:50 a.m. - 10:20 a.m.

## **Treatment of Dyspareunia: Medical, Physical Therapy**

*Susan Kellogg-Spadt, PhD, CRNP, IF*

10:20 a.m. - 10:35 a.m.

## **Treatment of Dyspareunia: Surgical**

*Andrew T. Goldstein, MD, FACOG, IF*

10:35 a.m. - 10:50 a.m.

## **Sexual Pain Q&A**

10:50 a.m. - 11:05 a.m.

## **Break with Exhibitors**

*Location: Foyer*

11:05 a.m. - 11:45 a.m.

## **Hormonal Therapy: Estrogens and Progestogens**

*Alan M. Altman, MD, IF*

11:45 a.m. - 12:15 p.m.

## **Androgen Treatment Guidelines and Safety Concerns**

*Sharon J. Parish, MD, IF, NCMP*

12:15 p.m. - 12:30 p.m.

## **Androgen Treatment Panel: Practical Considerations**

*Sharon J. Parish, MD, IF, NCMP*

*Irwin Goldstein, MD, IF*

12:30 p.m. - 12:50 p.m.

## **Genitourinary Syndrome of Menopause/Local Estrogen/New Emerging Therapy**

*Sharon J. Parish, MD, IF, NCMP*

12:50 p.m. - 1:05 p.m.

## **Q&A**

1:05 p.m. - 1:55 p.m.

## **Lunch with the Faculty: Practice Models**

*Location: South Ballroom*

1:55 p.m. - 2:05 p.m.

## **Break**

*Location: Foyer*

2:05 p.m. - 2:25 p.m.

## **Future Treatment Strategies for FSD**

*Irwin Goldstein, MD, IF*

2:25 p.m. - 2:35 p.m.

## **PGAD patient**

*Moderator: Susan Kellogg-Spadt, PhD, CRNP, IF*

# // PROGRAM - SATURDAY NOVEMBER 15, 2014

2:35 p.m. - 2:55 p.m.

## **PGAD**

*Irwin Goldstein, MD, IF*

2:55 p.m. - 3:10 p.m.

## **☞ Break with Exhibitors**

*Location: Foyer*

3:10 p.m. - 6:00 p.m.

## **Breakout Session I**

### **Station 1: Vulvar Dermatoses**

*Location: Center Ballroom*

*Andrew T. Goldstein, MD, FACOG, IF*

### **Station 2: Diagnostics I**

*Location: Rio Verde Room*

*Irwin Goldstein, MD, IF*

### **Station 3: Menopause Management: Cases**

*Location: Sonora Room*

*Alan M. Altman, MD, IF*

### **Station 4: Pelvic Floor Muscle Exam and Physical Therapy**

*Location: San Carlos Room*

*Susan Kellogg-Spadt, PhD, CRNP, IF*

### **Station 5: Sexual Health Patient Education: Ask-Tell-Ask**

*Location: Chaparral Room*

*Sharon J. Parish, MD, IF, NCMP (speaker)*

*Eli Coleman, PhD*

*Sue W. Goldstein, BA, CCRC, IF*

*Crista Elcira Johnson-Agbakwu, MD, MSc, IF*

*Sheryl A. Kingsberg, PhD, IF*

# // PROGRAM - SUNDAY NOVEMBER 16, 2014

All sessions will take place in the **Center Ballroom**, unless shown otherwise.

7:00 a.m. - 7:30 a.m.

## **🍴 Breakfast**

*Location: Foyer*

7:30 a.m. - 7:35 a.m.

## **Housekeeping**

*Sue W. Goldstein, BA, CCRC, IF*

7:35 a.m. - 7:50 a.m.

## **Coding and Billing**

*Susan Kellogg-Spadt, PhD, CRNP, IF*

7:50 a.m. - 8:10 a.m.

## **Panel: Surgical Interventions - Videos and Cases**

*Andrew T. Goldstein, MD, FACOG, IF*

*Irwin Goldstein, MD, IF*

8:10 a.m. - 8:20 a.m.

## **☞ Break: grab snack and go to breakout**

*Location: Foyer*

8:20 a.m. - 11:10 a.m.

## **Breakout Session II**

### **Station 1: Evaluation of Sexual Pain**

*Location: Sonora Room*

*Andrew T. Goldstein, MD, FACOG, IF*

### **Station 2: Diagnostics II: Clinical Cases**

*Location: Rio Verde Room*

*Alan M. Altman, MD, IF*

*Irwin Goldstein, MD, IF*

### **Station 3: Office Based Sex Therapy**

*Location: Chaparral Room*

*Sheryl A. Kingsberg, PhD, IF (speaker)*

*Sue W. Goldstein, BA, CCRC, IF*

*Sharon J. Parish, MD, IF, NCMP*

### **Station 4: Sexual Enhancers: Moisturizers, Lubricants and Accessories**

*Location: San Carlos Room*

*Susan Kellogg-Spadt, PhD, CRNP, IF*

### **Station 5: Cross-Cultural Sexual Health Dialogues**

*Location: Center Ballroom*

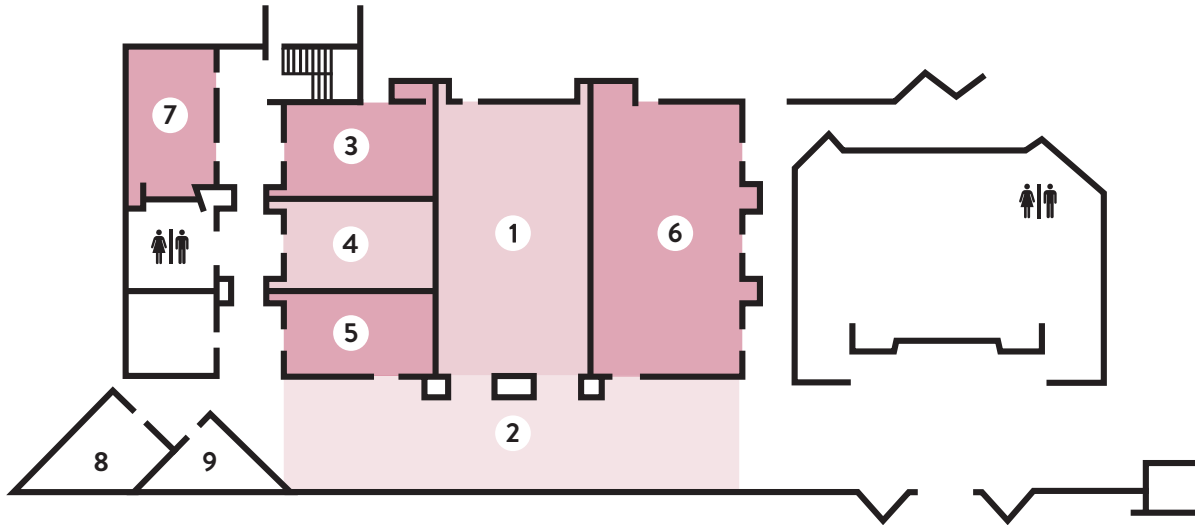
*Crista Elcira Johnson-Agbakwu, MD, MSc, IF*

11:15 a.m. - 11:30 a.m.

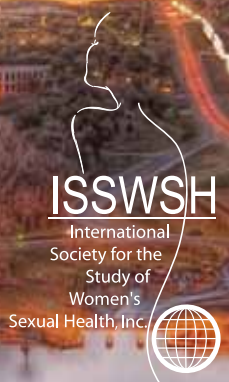
## **Conclusion and Course Wrap-up**

*Sue W. Goldstein, BA, CCRC, IF & Sharon J. Parish, MD, IF, NCMP*

## // FLOOR PLAN



- ① CENTER BALLROOM (MAIN SESSION ROOM)
- ② FOYER (TECHNICAL EXHIBITION)
- ③ SAN CARLOS ROOM
- ④ SONORA ROOM
- ⑤ RIO VERDE ROOM
- ⑥ SOUTH BALLROOM
- ⑦ CHAPARRAL ROOM
- ⑧ EXECUTIVE BOARDROOM
- ⑨ DIRECTOR'S BOARDROOM



# ISSWSH ANNUAL MEETING

February 19 - 22, 2015

Sheraton Austin Hotel at the Capitol  
Austin, TX - USA

\*\*\*\*\*  
**SAVE THE DATE**  
\*\*\*\*\*



**WWW.ISSWSH.ORG**

**Jointly provided by:**  
The International Society for the Study of  
Women's Sexual Health and Rutgers,  
The State University of New Jersey

